

PARKING LEVEL PLAN

SCALE : 1/8" = 1'-0"

M. B. HEARN ARCHITECTURE, LLC

1007B MAIN STREET - BELMAR, NJ - 07719
 (732) 556 - 9055 FAX: (732) 556-5012

MARY HEARN, AIA
 REGISTERED ARCHITECT
 C. 5099

PARKING LEVEL PLAN

Drawn By MBH

Approved

Scale

NOTED

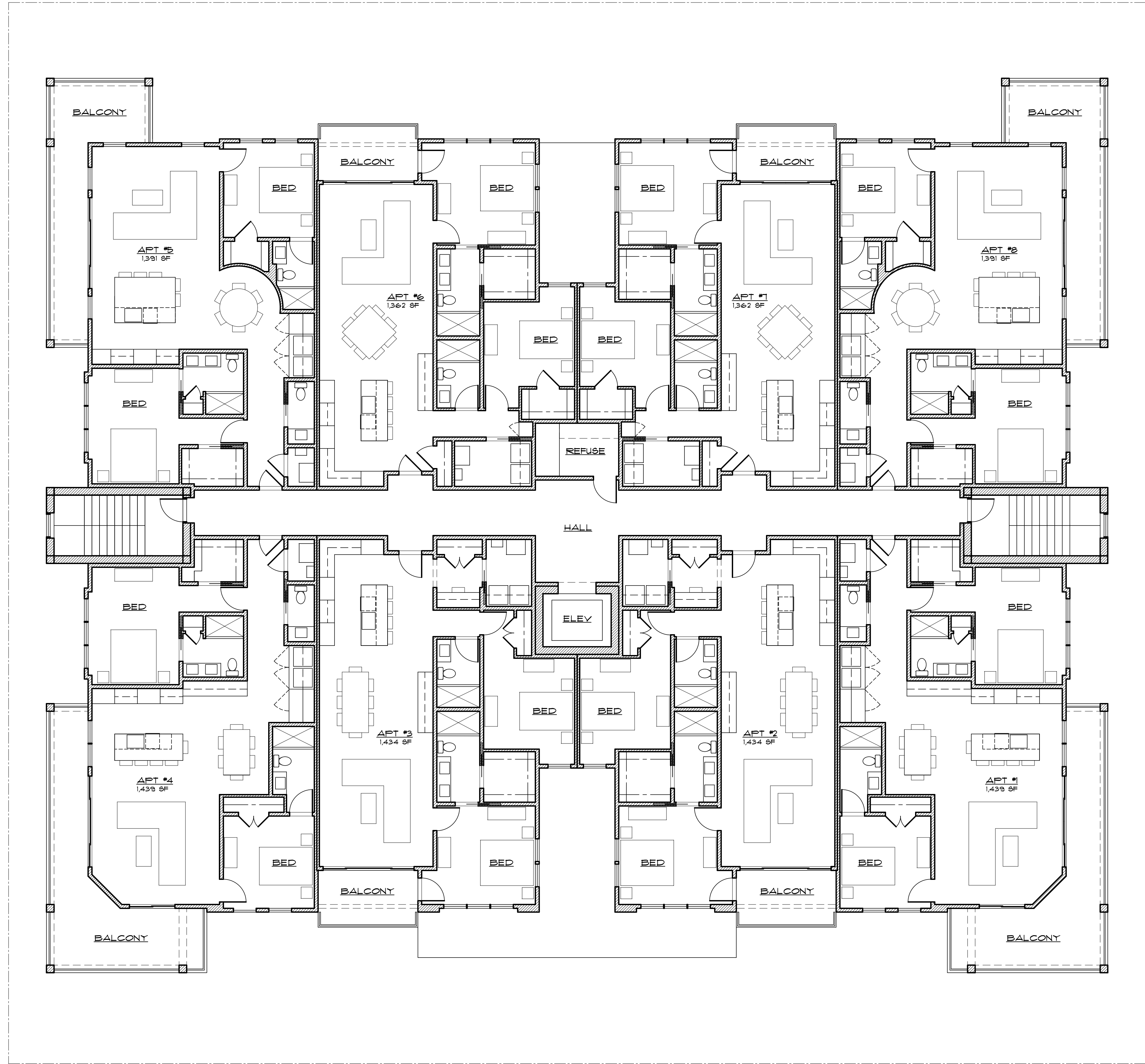
Date 11-16-200

Sheet No. X OF X

THE B
 24 UNIT CONDOMINIUM BUILDING
 112 TWELFTH AVE - BELMAR, NJ

Cont. No.

200803



FIRST/SECOND/THIRD FLOOR PLAN

SCALE: 1/8" = 1'-0"

THE B
24 UNIT CONDOMINIUM BUILDING
112 TWELFTH AVE - BELMAR, NJ

FIRST/SECOND/THIRD FLOOR PLAN

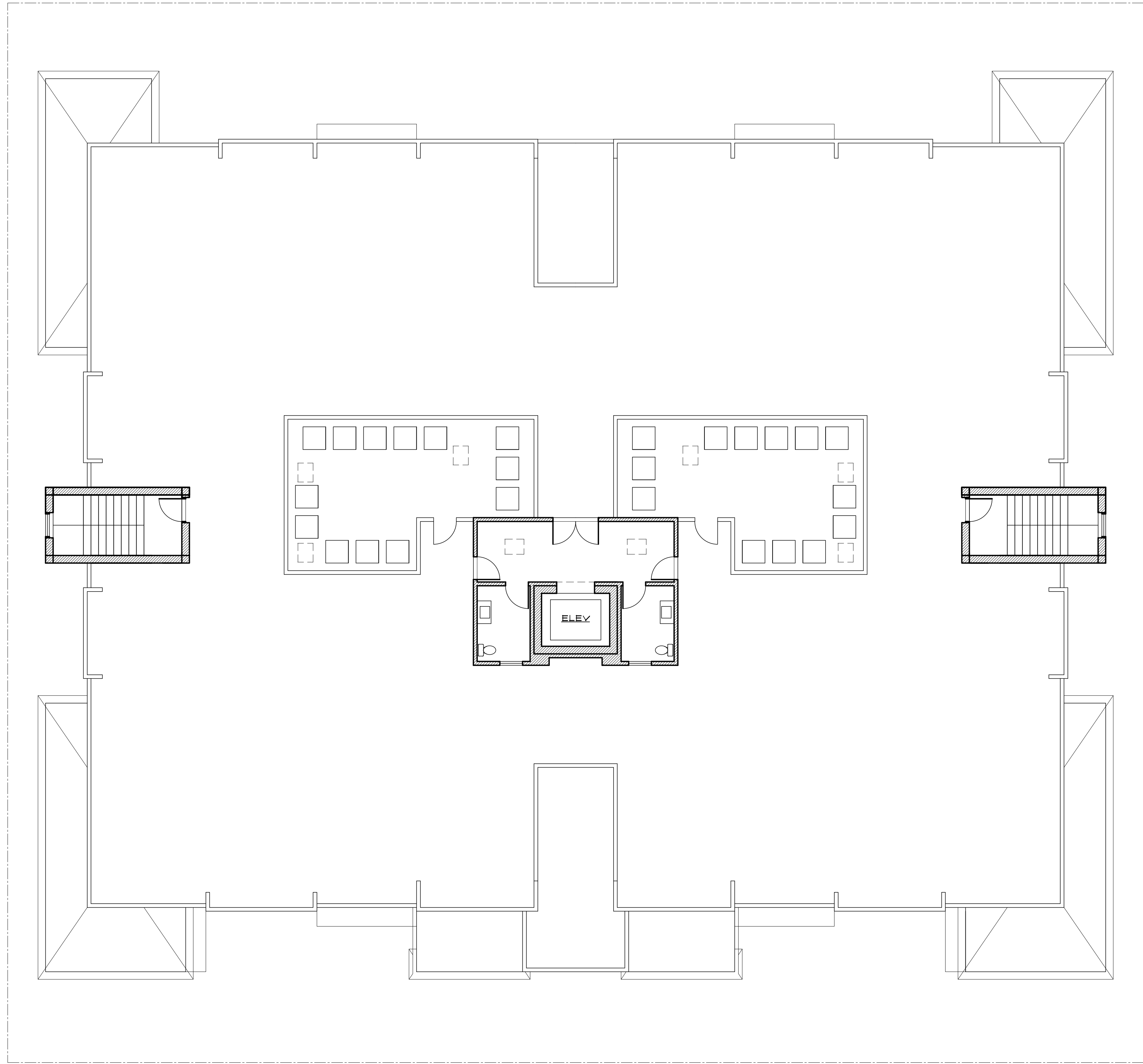
M. B. HEARN, AIA
REGISTERED ARCHITECT
C. 5009

M. B. HEARN ARCHITECTURE, LLC

1007B MAIN STREET - BELMAR, NJ - 07719
(732) 556 - 9055 FAX: (732) 556-5012

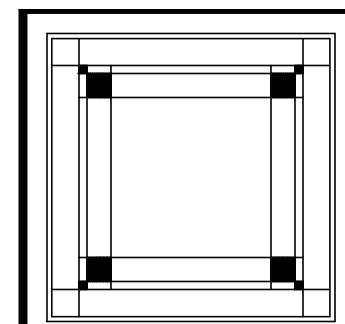
Drawn By: MBH
Approved: [Signature]
Scale: NOTED
Date: 11-16-200
Sheet No. X OF X

Cont. No.
200803



ROOF PLAN

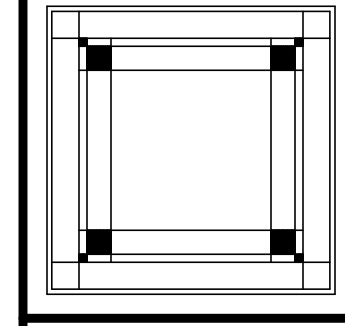
SCALE: 1/8" = 1'-0"



THE B 24 UNIT CONDOMINIUM BUILDING 112 TWELFTH AVE - BELMAR, NJ		Date	11-16-200	Sheet No.	X OF X
ROOF PLAN	Drawn By	MBH	Approved	NOTED	Scale

M. B. HEARN, AIA
REGISTERED ARCHITECT
C - 5009

M. B. HEARN ARCHITECTURE, LLC
1007B MAIN STREET - BELMAR, NJ - 07719
(732) 556 - 9055 FAX: (732) 556-5012



Cont. No.
200803



SOUTH (FRONT) ELEVATION

SCALE : 1/8" = 1'-0"



EAST (SIDE) ELEVATION

SCALE : 1/8" = 1'-0"

THE B
24 UNIT CONDOMINIUM BUILDING
112 TWELFTH AVE - BELMAR, NJ

Sheet No.
X OF X

Date 11-16-200

ELEVATIONS

Approved

Scale NOTED

Drawn By MBH

MARTY HEARN, AIA
REGISTERED ARCHITECT
C - 5009

M. B. HEARN ARCHITECTURE, LLC

1007B MAIN STREET - BELMAR, NJ - 07719
(732) 556 - 9055 FAX: (732) 556-5012

Comm. No.

200803



NORTH (REAR) ELEVATION

SCALE : 1/8" = 1'-0"



WEST (SIDE) ELEVATION

SCALE : 1/8" = 1'-0"

THE B
24 UNIT CONDOMINIUM BUILDING
112 TWELFTH AVE - BELMAR, NJ

Sheet No. X OF X

Date 11-16-2010

Scale NOTED

Approved

MBH

ELEVATIONS

M. B. HEARN, AIA
REGISTERED ARCHITECT
C. - 5009

M. B. HEARN ARCHITECTURE, LLC

1007B MAIN STREET - BELMAR, NJ - 07719
(732) 556 - 9055 FAX: (732) 556-5012

Cont. No.

200803